

# BHS Neighbor Meeting - March 12, 2025

Information on BHS Bond & Sinking Fund  
Construction Projects



BERKLEY  
SCHOOLS

# Introductions

Scott Francis, Superintendent

Chris Smallwood, Director of Facilities

Jessica Stilger, Director of Communications

Meghan Ashkanani, Assistant  
Superintendent of Teaching, Learning,  
and Technology

Andy Meloche, BHS Principal

Sgt. Dave Arney, School Resource Officer

Dave Melville, Senior Project Manager,  
McCarthy & Smith

# 2025 – The Year of BHS Construction!

**March 17, 2025:** Black Box Theatre construction begins

**March 2025:** Pool construction begins

**April 2025:** The Bear Complex construction begins

**May 1, 2025:** Auditorium construction begins

**June 2025:** Science Wing construction begins after school ends

**August 2025:** Pool Grand Opening

**Start Of School 2025:** Science Classrooms and Band/Orchestra Rooms open

- Burton & Pattengill Multi-Purpose Additions Grand Opening

**October 2025:** Science Wing Grand Opening - Labs

**January 2026:** Performing Arts Center Grand Opening (Auditorium, Black Box Theatre, Instrument Commons)

**October 2026:** The Bear Complex Grand Opening

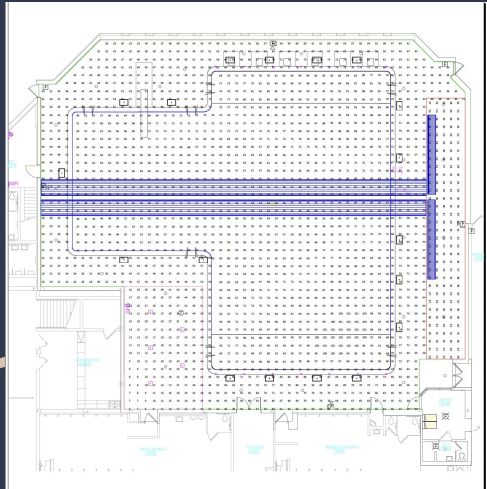


**March 17, 2025:** Black Box Theatre construction begins

### What You Should Know:

- March 2025 - January 2026
- Choir classroom, small performances, instrument storage
- Impacts parking in March 2025 - Sunnyknoll Lot
- **Plus** - Band and Orchestra Classroom renovations from June - August
- Separates the parking lots





## March 2025: Pool construction begins

### What You Should Know:

- March - August 2025
- Tile repair, HVAC, scoreboard, timing system, blocks, diving board, lighting, painting, office remodel
- 2 Phases, Summers 2025 & 2026
- No parking impact; open for the Fall season

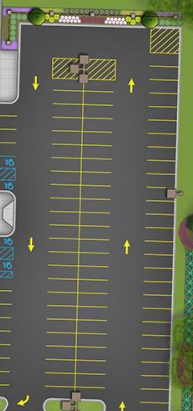
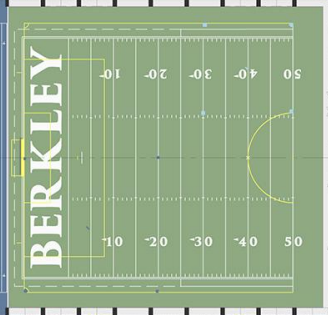
**April 2025:** The Bear Complex construction begins – across from the high school

### What You Should Know:

- April 2025 - October 2026
- Parking, indoor fieldhouse, outdoor fields with lighting and scoreboard, crosswalks (with safety upgrades), weight room
- Student parking lot impact
  - 2025-26 school year & beginning of 2026-27 school year
  - Extra parking when done



BERKLEY SCHOOL DISTRICT  
**B.E.A.R. FIELD HOUSE PROJECT**  
SITE PLAN  
NOVEMBER 2024



PUBLIC ALLEY

NORTH

FRANKLIN RD.

BERKLEY AVE.

DOROTHEA RD.

CATALPA DR.





**May 1, 2025:** Auditorium construction begins

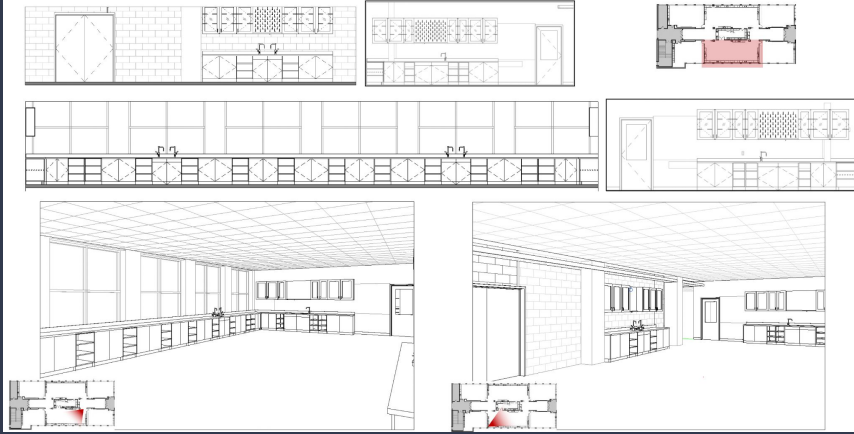
### What You Should Know:

- May 2025 (after Spring Musical) - January 2026
- New lobby, refurbish old lobby, seats, lights, sound, backstage, digital screen, and more
- Student parking lot impact - the drop off and parking along the Auditorium (Catalpa strip) will close May 1, 2025 & re-open for Fall 2025





SOUTH SCIENCE LAB



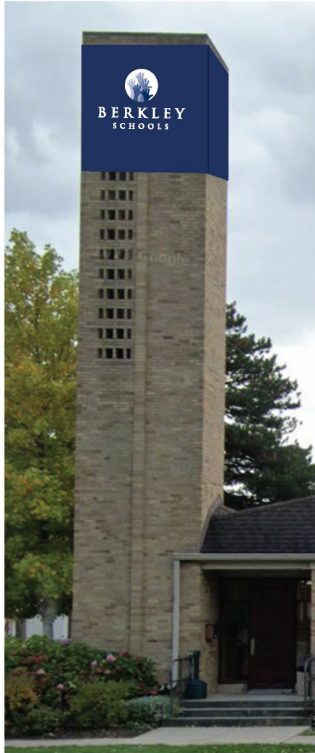
**June 2025:** Science Wing construction begins after school ends

**What You Should Know:**

- June - October 2025
- All Science Classrooms and Prep Rooms
- Classrooms available when school starts
- Labs will be available in October 2025
- No parking impact

NORTH/SOUTH SHARED PREP





## Now - August 2025: The Den

### What you should know:

- March - August 2025 Construction
- Hosts Adult Transition Program & Robotics
- Parking lot on Catalpa for construction
- Green space between building and BHS used for construction loop for trucks
- Church staff to park in street during the week, in lot during services on the weekend

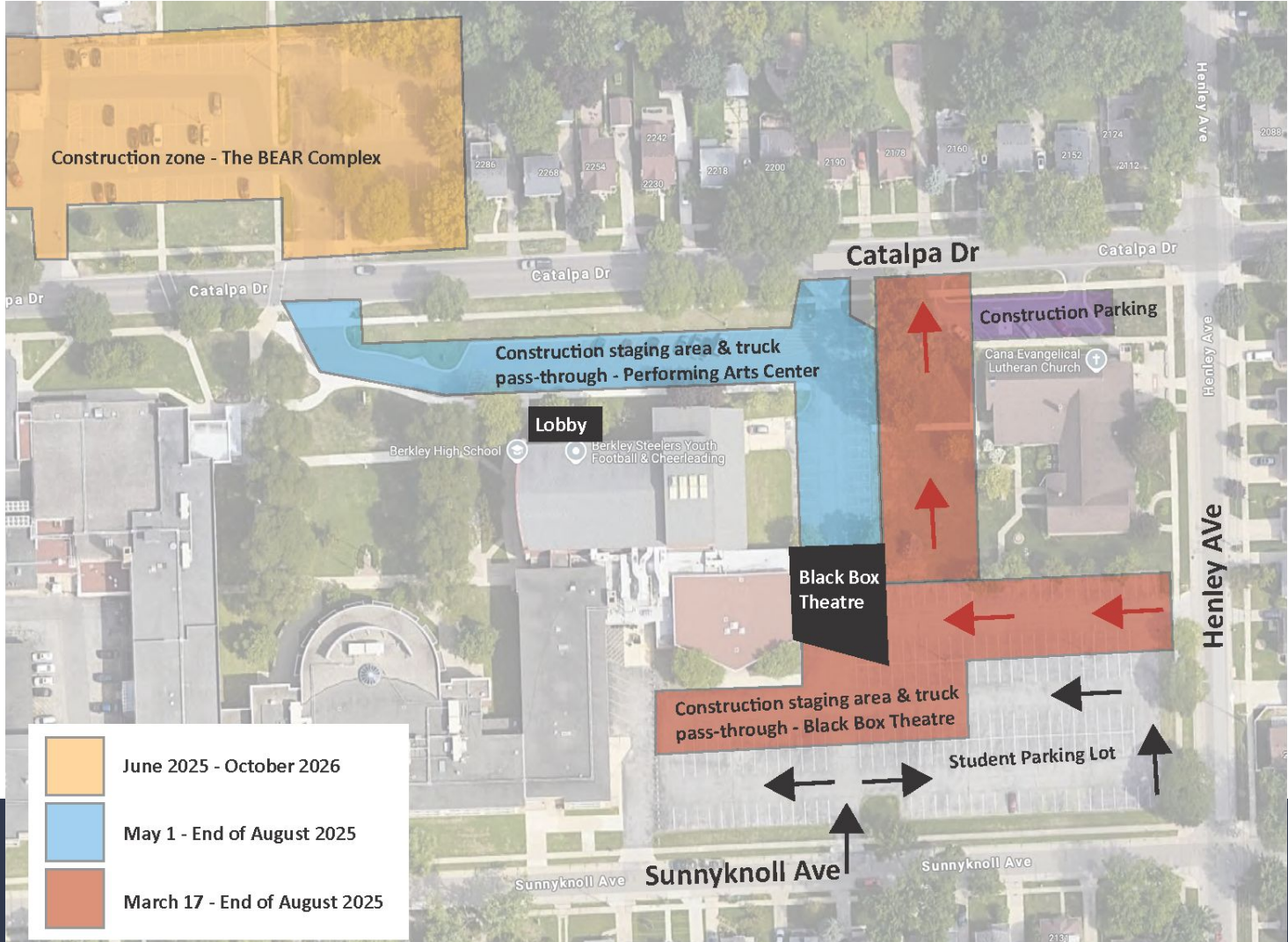
# Additional construction around the District - Summer 2025

## Burton & Pattengill - Multi-Purpose Addition, Gym Remodel, Parking Lots





# Parking Impact



Construction zone - The BEAR Complex

Construction staging area & truck pass-through - Performing Arts Center

Black Box Theatre

Construction staging area & truck pass-through - Black Box Theatre

Construction Parking

- June 2025 - October 2026
- May 1 - End of August 2025
- March 17 - End of August 2025



June 2025 - October 2026

May 1 - End of August 2025

March 17 - End of August 2025

Lobby

Berkley High School

Berkley Steelers Youth Football & Cheerleading

Cana Evangelical Lutheran Church

Student Parking Lot

pa Dr

Catalpa Dr

Catalpa Dr

Catalpa Dr

Catalpa Dr

Henley Ave

Henley Ave

Henley Ave

Sunnyknoll Ave

Sunnyknoll Ave

Sunnyknoll Ave

2130

2088

2

- Starting March 17, student parking will be available on the practice field across Catalpa and BHS
- Staff will be encouraged to park in the lot by the gym, near Coolidge
- Students will be encouraged to car pool and students who live close will be encouraged to walk or ride bikes to school
- Increase in street parking next school year in the surrounding areas
- Asking for grace and patience for students
- Always encourage students to park legally, be good citizens in the community and represent BHS with pride
- Continue working on alternative parking plans for next school year
- All non-BHS events held in the Auditorium have been relocated to other schools in the District

# Public Safety Partnership

**Sgt. Dave Arney, SRO**

Partnering with Berkley Public Safety

School Resource Officer housed at BHS

Will work with patrol officers to resolve parking violations and complaints on city streets

Residents who observe a parking violation should contact the Berkley Public Safety non-emergency line at 248-658-3380



# Questions?

[www.berkleyschools.org/bond](http://www.berkleyschools.org/bond)

Please email questions to  
[communications@berkleyschools.org](mailto:communications@berkleyschools.org)



BERKLEY  
SCHOOLS